

TRENDS

AS FEATURED IN HOME AND ARCHITECTURAL TRENDS VOL. 18 NO. 8

Cooper-Pacific Kitchens
Kitchen Interior Design



Cover and above: Cooper-Pacific Kitchens designed and supplied the kitchen cabinetry in this Bryan Construction home. Here, anigre wood has been teamed with stainless steel, granite and glass to enhance the cabinetry's fluid lines and add a textural element. A peninsula partially wrapped in granite extends to a breakfast bar formed by a raised glass ledge.

In keeping with the rest of this Bryan Construction home, the kitchen has a streamlined look that's softened by warm tones of anigre wood.

Cooper-Pacific Kitchens worked with the design team to create the kitchen cabinetry, which incorporates pieces from the SieMatic range.

Accents of stainless steel include the toekick on the lower cabinetry and the integrated appliances, both of which help to accentuate the cabinetry's clean lines. Along with its flush appearance, the cabinetry incorporates ample storage. Pull-out column pantries in stainless steel flank either side of the integrated refrigerator, while special channel

drawers provide roomy niches for accessories. The granite countertops partially wrap the peninsula and also form the backsplash, where a series of square cut-outs creates visual interest.

Large light baffles reinforce the island as the centerpiece of the kitchen. As a mix of wood, stainless steel, granite and glass, the island provides a versatile work surface that comes complete with a cooktop and sink for washing vegetables.

To create its unusual dimensions, the team from Cooper-Pacific Kitchens worked closely with the interior designer, says company vice president Kevin Cooper. Precise attention to

detail was especially important when creating the floating glass countertop, he says. Suspended above a stainless steel shelf, the sheet of glazing was carefully formed to integrate a round stainless steel sink wrapped in anigre wood.

As well as the kitchen cabinetry, Cooper-Pacific Kitchens also designed and supplied the cabinetry for all the bathrooms in the home.

Contact Cooper-Pacific Kitchens, 8687 Melrose Ave, Pacific Design Suite G-299, West Hollywood, CA 90069, phone (310) 659 6147 or (800) 743 6284, fax(310)6591835. Website:www.cooperpacific.com. Email: kc@cooperpacific.com.



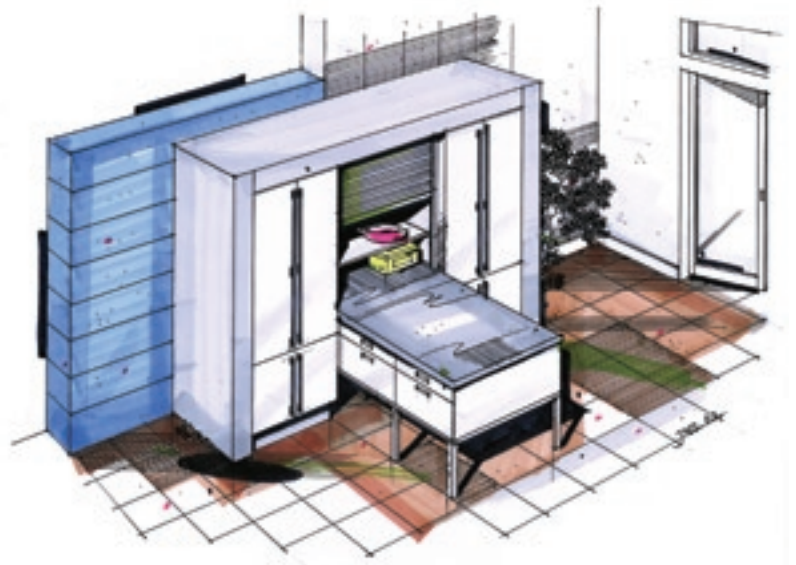
Above: As the visual focal point of the kitchen, the island has a strong, sculptural look.

Left: Cooper-Pacific Kitchens also designed and supplied the bathroom cabinetry for the home. Fixed to the wall, the vanity in the master bathroom appears to be floating, accentuating the room's sense of space.



For over 18 years, Cooper-Pacific Kitchens has created the finest kitchens in homes around the world. We can provide the statement you wish to make whether it be modern European or classic American style. To realize your sense of style in kitchens, our designers will personalize a space that is both functional and aesthetic. Let us show you how SieMatic can fit your lifestyle.

SieMatic®



Cooper-Pacific Kitchens
Kitchen Interior Design

8687 Melrose Avenue, Suite G299 West Hollywood, CA 90069
Ph: 800 743 6284 Fax: 310 659 1835
www.cooperpacific.com